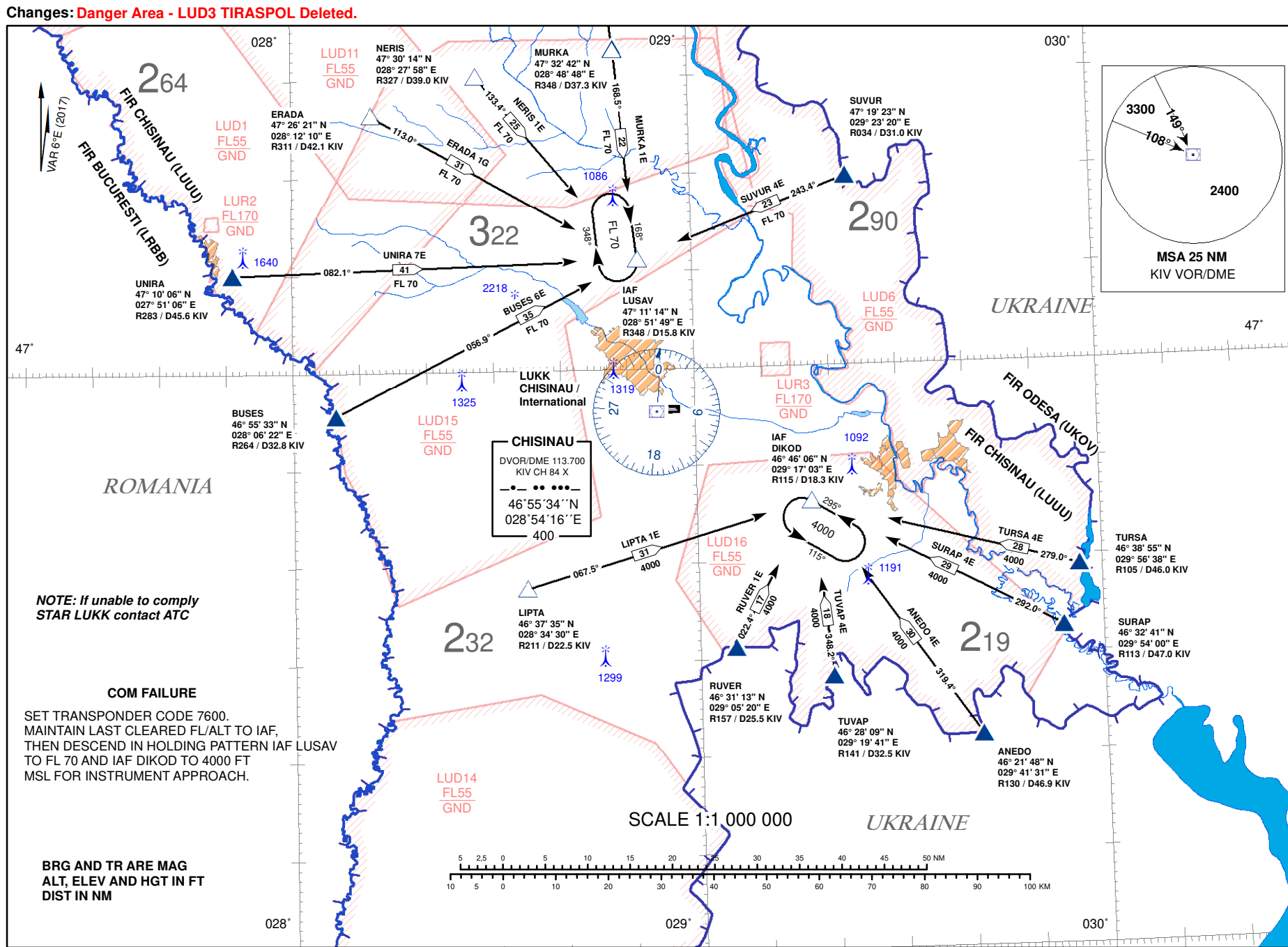
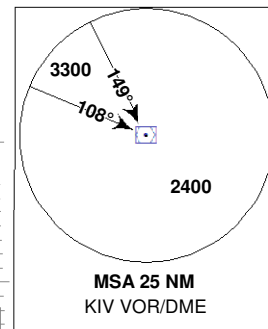


TRANSITION LEVEL BY ATC
TRANSITION ALTITUDE 4000FT

CHISINAU/Intl (LUKK)
RWY 26
RWY 27



AIRAC AMDT 001/2019

STANDARD ARRIVAL ROUTES -
INSTRUMENT (STAR) - ICAOCHISINAU/Intl (LUKK)
RWY 26
RWY 27

Designator	Identification Significant Points	Mag Track	Dist NM	MNM FL/Altitude FT	Remarks
ANEDO 4E	ANEDO FOUR ECHO ▲ ANEDO △ DIKOD				
		319.4°	30	4000	
BUSES 6E	BUSES SIX ECHO ▲ BUSES △ LUSAV				
		056.9°	35	FL70	
ERADA 1G	ERADA ONE GOLF △ ERADA △ LUSAV				
		113.0°	31	FL70	
LIPTA 1E	LIPTA ONE ECHO △ LIPTA △ DIKOD				
		067.5°	31	4000	
MURKA 1E	MURKA ONE ECHO △ MURKA △ LUSAV				
		168.5°	22	FL70	
NERIS 1E	NERIS ONE ECHO △ NERIS △ LUSAV				
		133.4°	25	FL70	
RUVUR 1E	RUVUR ONE ECHO ▲ RUVUR △ DIKOD				
		022.4°	17	4000	
SURAP 4E	SURAP FOUR ECHO ▲ SURAP △ DIKOD				
		292.0°	29	4000	
SUVUR 4E	SUVUR FOUR ECHO ▲ SUVUR △ LUSAV				
		243.4°	23	FL70	
TURSA 4E	TURSA FOUR ECHO ▲ TURSA △ DIKOD				
		279.0°	28	4000	
TUVAP 4E	TUVAP FOUR ECHO ▲ TUVAP △ DIKOD				
		348.2°	18	4000	
UNIRA 7E	UNIRA SEVEN ECHO ▲ UNIRA △ LUSAV				
		082.1°	41	FL70	